



STEP 1 – PRIOR TO INSTALLATION

- A) Bushwacker only approves installing the flares according to these written instructions with the hardware provided. WARNING:** Failure to install according to these instructions will invalidate the warranty. This includes, but is not limited to using alternative installation methods, hardware, or materials. **DO NOT USE:** Loctite, SuperGlue, or similar products on the hardware or the flares.
- B) Fit:** Verify the fit of the flares to vehicle. (Some filing, sanding, or cutting may be necessary to ensure proper fit).
- C) Painting:** (Optional) if paint is desired it must be done prior to installing flares on vehicle. Clean outer surface with a good grade degreaser. **DO NOT USE LACQUER THINNER OR ENAMEL REDUCER AS A DEGREASER.** Wipe outer surface thoroughly with a tack rag prior to paint. Application of plastic adhesion promoter for ABS plastic as per your paint system manufacturer's recommendations is required. Paint flares using a high quality enamel, or polyurethane automotive paint. If painting edge trim (not recommended), use a flex additive.
- D) Performance:** Using larger Tires may increase the area required to turn the vehicle. Some Tire/Rim combinations may require lowering bump stops and or installing steering stops to prevent tire from contacting flare.
- E) Exhaust System:** Modifications may be necessary to maintain a minimum 4" clearance between flares and exhaust pipes. (Exhaust gases should not vent directly onto flares)
- F) Metal Protection:** All exposed fasteners and bare metal should be treated with rust resistant paint BEFORE installing flares. Spray inner fender wells with undercoating AFTER flare attachments have been completed.
- G) Decals:** Flares may interfere with existing decals on vehicle. If you wish, remove decals prior to installation of flares.
- H) Care & Cleaning:** Bushwacker fender flares are built to last; any detergent you use to wash your vehicle is sufficient to clean the flare. Do not use any harsh abrasive detergents.

Toyota Pocket Style® Fender Flares Set of 4

Front Part #30922-02

Rev-1 7/18/2016

For complete fitment info visit : www.bushwacker.com

TOOLS FOR EASY INSTALLATION:

- Utility Knife
- Vise Grips
- Socket Wrench
- 1/2" Wrench
- 5/16" Socket
- 10mm socket

PLEASE READ: Dirt and debris can become lodged between the fender flares and the vehicle's fenders, causing scratching and paint wear from vibration. Lund International is not responsible for any damage, and the installation of our fender flares is done with the buyer's understanding that this scratching and paint wear may occur.

LIMITED LIFETIME WARRANTY AGAINST ANY MANUFACTURING DEFECTS

- To claim a warranty, you must provide Proof of Purchase.

Included in Hardware Kit:

- | | | | | | | | | | | | | | |
|----|-------------------------------------------------------------------------------------|----|-------------------------------------------------------------------------------------|----|-------------------------------------------------------------------------------------|----|-------------------------------------------------------------------------------------|----|--------------------------------------------------------------------------------------|----|---------------------------------------------------------------------------------------|----|---------------------------------------------------------------------------------------|
| 1. |  | 2. |  | 3. |  | 4. |  | 5. |  | 6. |  | 7. |  |
| | SW1-0036,
M6-.3 x 20mm Hex
Magni Black Screw,
32 pcs | | NU1-0013,
#14 Black "U"
Spring Nut,
4 pcs | | SW1-0067,
5/16 x 18 x 3/8"
SS Torx Screw,
34 pcs | | WA1-0012,
.320 x .700 x .03
SS Washer,
34 pcs | | NU1-0019,
5/16-18 Jam Fin.
Nylock Nut,
34 pcs | | SW1-0052,
T-45 Torx Bit,
1 pc | | GP1-0025,
EX4008 Wiper
Style Edge Trim,
316 inches |
| 8. |  | | | | | | | | | | | | |
| | ET1-0002,
Edge Trim Tool,
1 pc | | | | | | | | | | | | |

COMPONENT LIST



STEP 2 - EDGE TRIM INSTALLATION

A. Peel two to three inches of red vinyl backing away from Edge Trim (GP1-0025) tape. Applying the adhesive side of the edge trim to the inner side of the flare, affix the edge trim to the top edge of the flare (the portion that comes in contact with the vehicle).

B. Press edge trim into place along the top edge of the flare in one-foot increments, pulling red vinyl backing free as you continue to work your way around the top edge of the flare.



Flare Pocket Hardware Installation:



Put a Washer (WA1-0012) on each Bolt (SW1-0067).

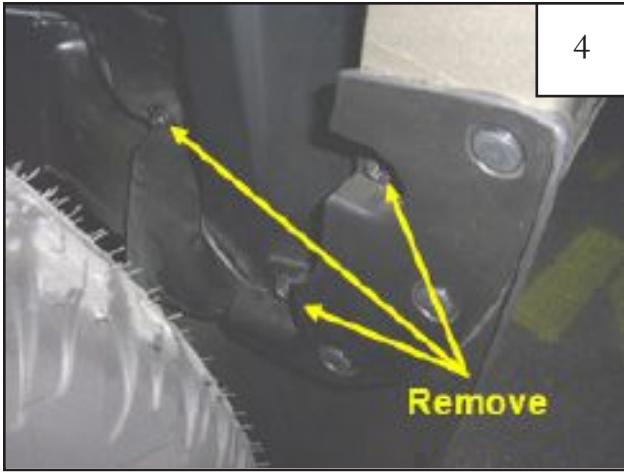


Put each Bolt/Washer combination through a pocket hole in the flare, Bolt head and Washer on the outside.



Place a Nut (NU1-0019) over the end of each Bolt and tighten, using a 1/2" wrench for the Nut and the supplied Torx Bit (SW1-0052) for the Bolt. Repeat for remaining pockets.

Front Flare Installation Procedures:

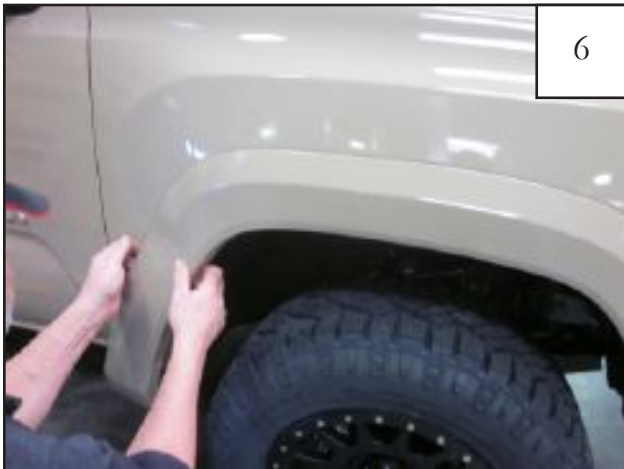


If factory mud flap is installed, remove three factory screws from the mud flap. Save screws for reinstallation.



Remove five factory screws.

If there are no factory flare installed go to Step 10.



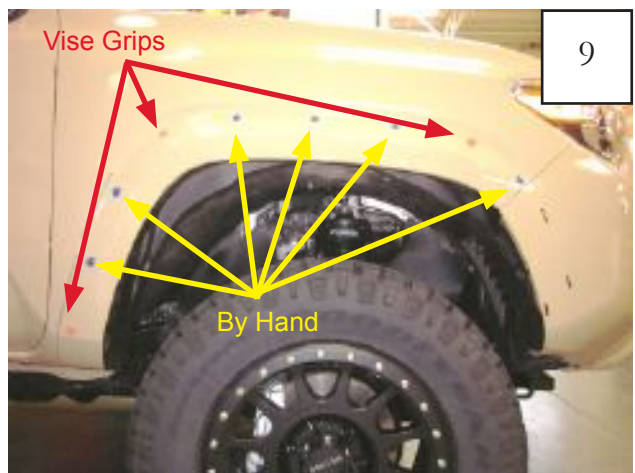
Remove flare by pulling part away from side of vehicle



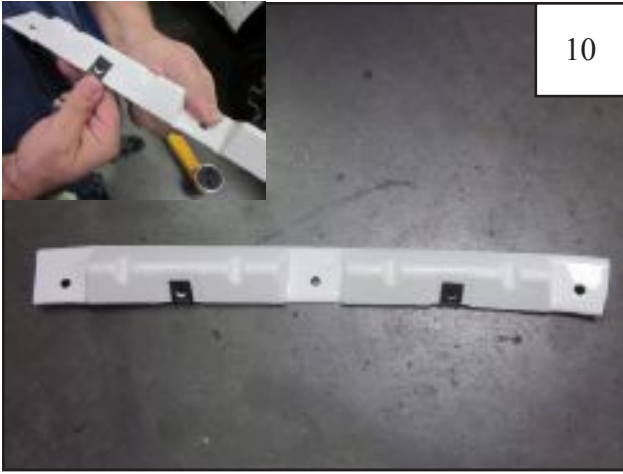
Using a clockwise twisting motion, remove eight factory plastic clips from fender. See step 9.



Remove one clip from front using vise grips, pulling with a rocking motion. See step 9.



Clip locations.



10

Install two clips (NU1-0013) on supplied bracket.



11

Line up the holes in the inner piece with the three uppermost factory holes. NOTE: Driver's side inner piece is marked with an "LF" and passenger's side inner piece is marked with an "RF"



12

Using three supplied screws (SW1-0036), attach bracket to wheel well. Tighten all screws.



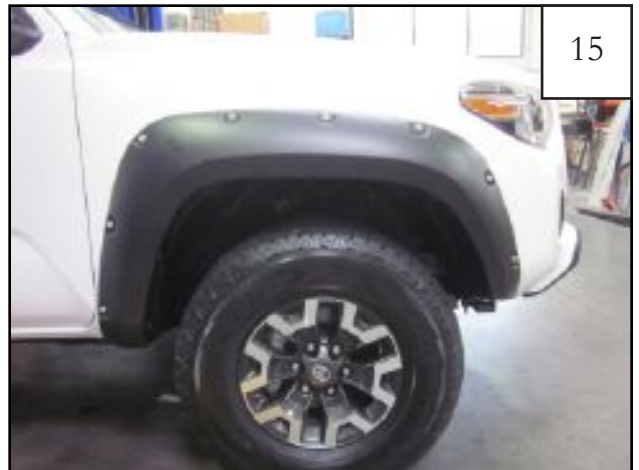
13

Position flare on fender, pressing inward on the flare, line up the flare mounting holes with the mounting clips on the bracket. Install 2 supplied screws (SW1-0036) through the flare and into the clips on the bracket. Do not tighten.



14

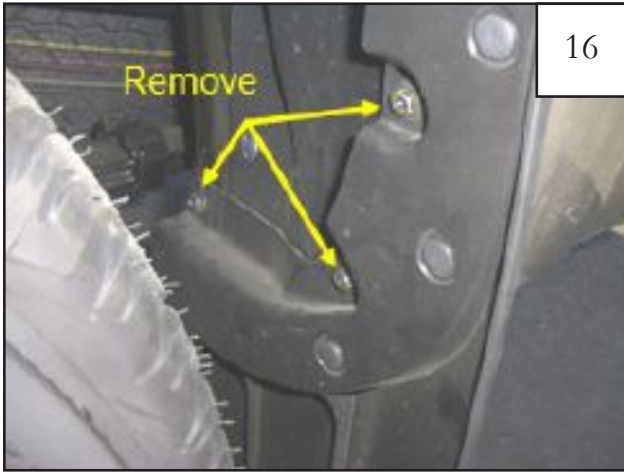
Still holding flare to fender, install supplied screws (SW1-0036) into remaining mounting holes (4 places).



15

Tighten all screws. Installation Complete.

Rear Flare Installation Procedures:



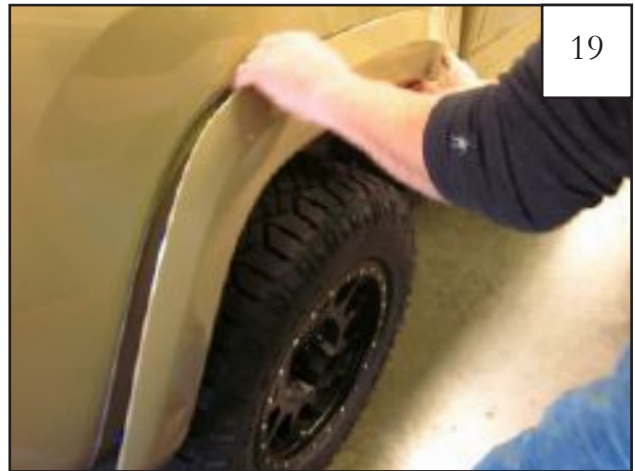
If factory mud flap installed, remove three factory screws from mud flap. Discard mud flap.



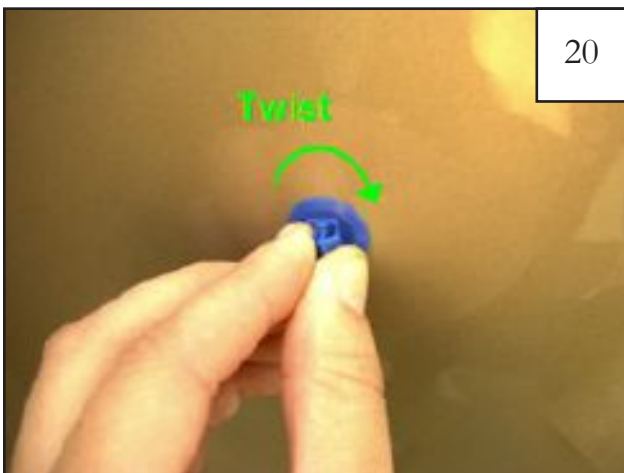
OPTIONAL: If there is no factory flare installed on the vehicle, you will need to remove the guard piece located at the rear of the bed or it will interfere with flare installation.



Remove seven factory screws.
If there is no factory flare installed, go to Step 23.



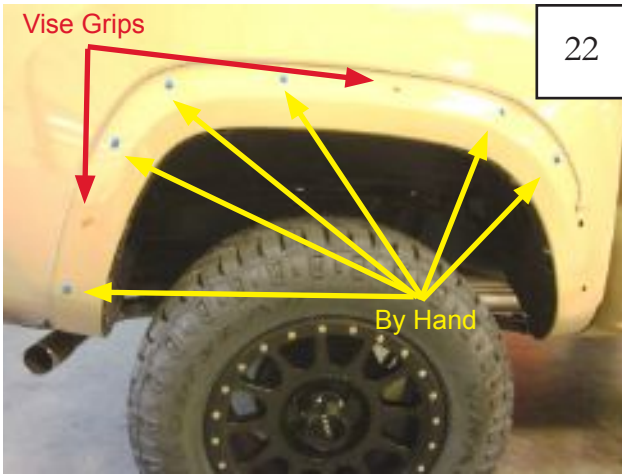
Remove flare by carefully pulling part away from side of vehicle.



Using a clockwise twisting motion, remove eight factory plastic clips from fender. See step 22.



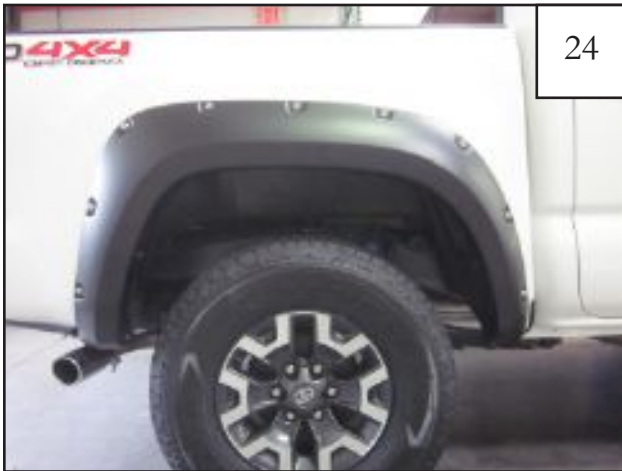
Remove three clips from fender using vise grips, pulling with a rocking motion. See step 22.



Clip locations.



Holding flare to fender, install supplied screws (SW1-0036) into mounting holes (7 places).



Tighten all screws. Installation complete.

Edge Trim Tool Procedures:



Using supplied Edge Trim Tool (ET1-0002), seat edge trim against vehicle by hooking curved end under edge trim at one end of flare. Next, slide around outer edge of flare to the other end.



Using flat end of supplied Edge Trim Tool (ET1-0002), seat edge trim against flare by inserting straight end between edge trim and flare at one end. Next, slide around entire edge to the other end.